



Child Evangelism Fellowship **TASK FLOWS**

Updated: April 1, 2016

Original Publish Date: February 3, 2016

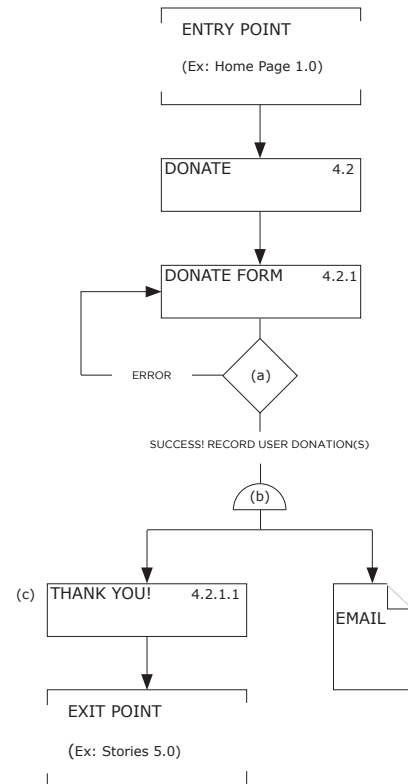
This document is confidential, proprietary property of Five Q for the sole use of Five Q and its authorized customers. By accepting this material, you agree to respect the confidential nature of this material, not to make copies of, distribute or divulge the contents without the expressed written permission of Five Q.

WWW.FIVEQ.COM | P.O. BOX 356, ATLANTIC, IA 50022 | (800) 747-4212



DONATION TASK FLOW

NOTES



(a) Donation Form (4.2.1): System Decision Point

- If donation information is valid (success), simultaneously 1) record user donation(s), 2) send user to Thank You page (4.2.1.1), and 3) send user a confirmation email (thanks, receipt, instructions, etc.).
- If donation information is not valid, return user to the Donation Form (4.2.1) and include error(s).

(b) Simultaneous Interaction

(c) Thank You! (4.2.1.1)

- Include content that creates an emotional connection between the donor and the cause to reassure the contributions are (and will) make a difference (i.e. imagery/video, stories, etc.). Consider including CTA's to specific stories (Stories 5.0).

Question: How do donors currently receive end-of-year contribution statements?



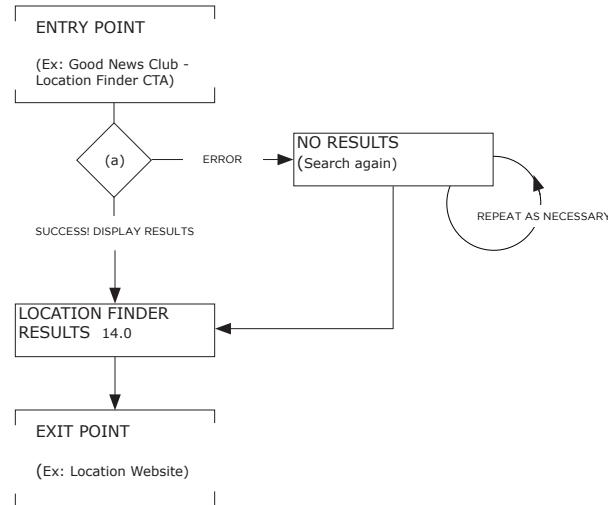
LOCATION FINDER TASK FLOW

NOTES

(a) Location Search: System Decision Point

- If search location area includes results, display results.
- If search location area does not include results, display user alert indicating no results were found, and present user with the option to search again.

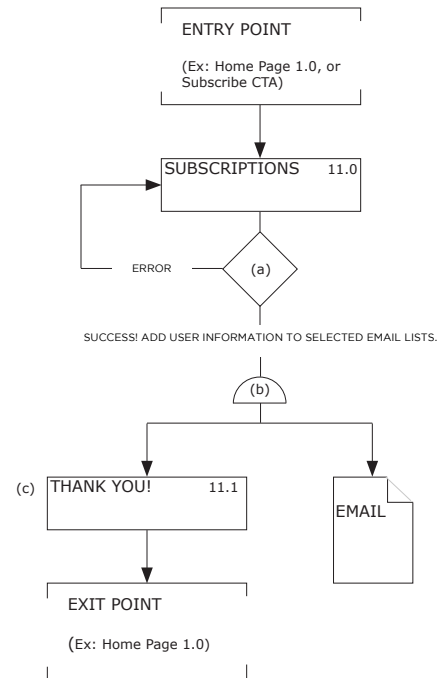
...





SUBSCRIPTIONS TASK FLOW

NOTES



(a) Subscriptions (11.0): System Decision Point

- If user information is valid (success), simultaneously 1) add user information to selected email lists, 2) send user to Thank You page (11.1), and 3) send user a confirmation email (thanks, lists subscribed to, etc.).
- If user information is not valid, return user to the Subscription Page (11.0) and include error(s).

(b) Simultaneous Interaction

(c) Thank You! (11.1)

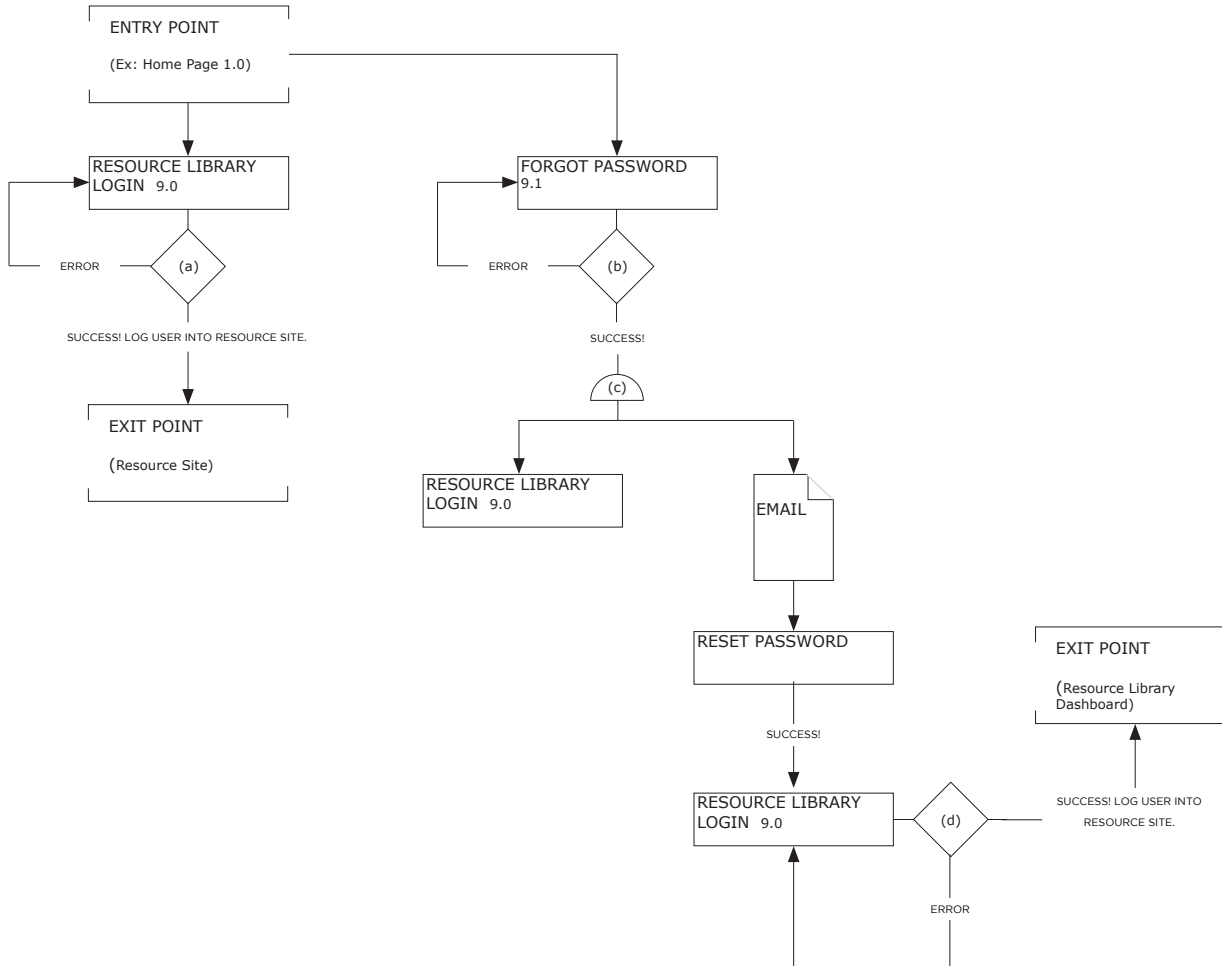
- Include confirmation that user was indeed subscribed to the email lists selected.

...



RESOURCE LIBRARY LOGIN TASK FLOW

NOTES



- (a) Resource Library Login (9.0): System Decision Point
 - If login information is valid (success), log user into the Resource Library.
 - If login information is not valid, return user to the Resource Library Login (9.0) screen and include error(s).
- (b) Forgot Password (9.1): System Decision Point
 - If user email address entered is valid (found in database), simultaneously 1) return user to Resource Library Login (9.0) screen (include email sent success message and instructions), and 2) send user an email with instructions on how to reset their password.
 - If user email address entered is not valid (not found in database), return user to Forgot Password (9.1) screen and include error(s).
- (c) Simultaneous Interaction
- (d) Resource Library Login (9.0): System Decision Point:
 - If login information is valid (success), log user into the Resource Library.
 - If login information is not valid, return user to the Resource Library Login (9.0) screen and include error(s).

...